

# Act to Adapt Frome

**Supporting communities across Somerset to adapt to climate change through a series of collaborative events**



## Shaping a plan for your community

Share your ideas for how Frome can adapt to Climate Change!

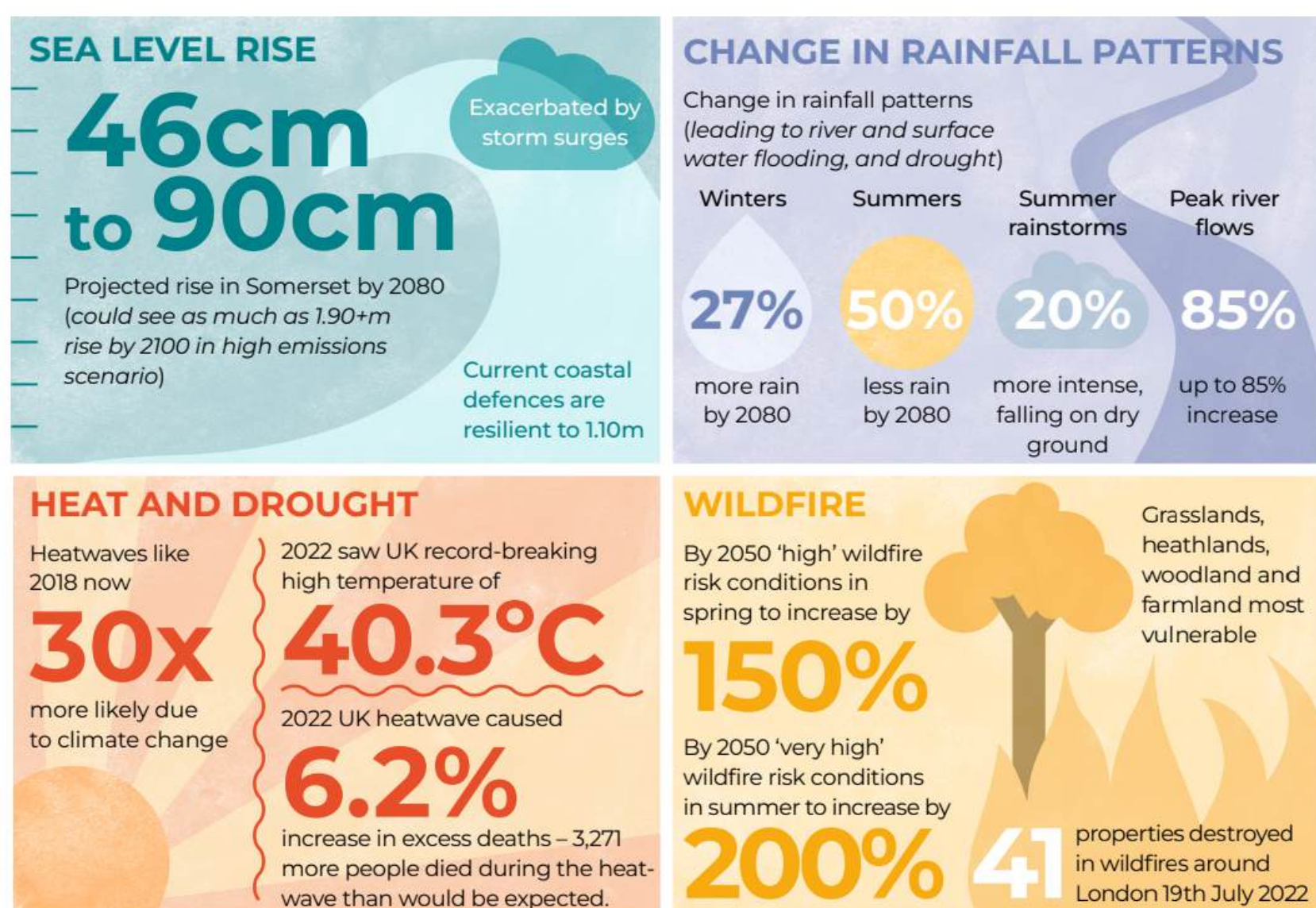
### What is Adaptation?

Adjusting to the current impacts of climate change or planning for those that are projected.

Adaptation can seek to limit, avoid harm, or explore beneficial opportunities.



### Why do we need to Adapt?



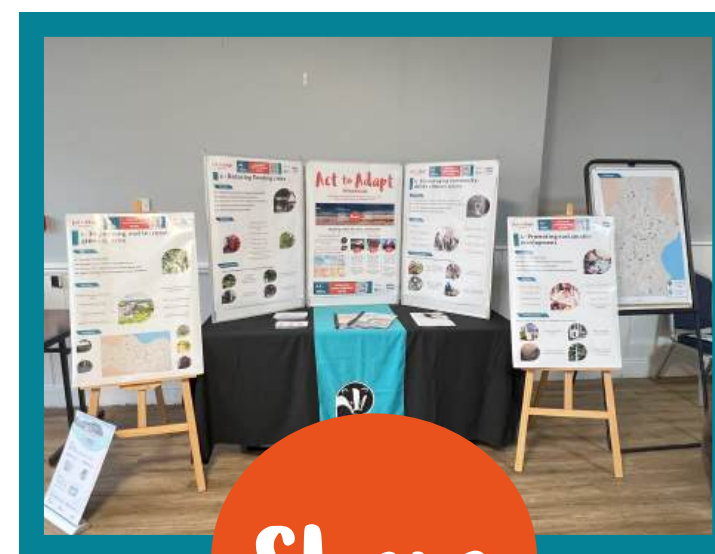
### The process



**Talk**

A workshop to bring local people together to talk about areas at risk from climate change impacts and potential solutions to adapt.

This is a community-wide effort – every voice and idea is valuable to feed into a Climate Adaptation Plan.



**Shape**

Through online and in-person opportunities, residents will get a chance to provide feedback and suggest other actions to be included in the climate adaptation plan.

This will ensure the plan is shaped by local voices and knowledge.



**Act**

The Climate Adaptation Plan will be launched with an event, bringing residents together to act and implement as many adaptations as possible!

The plan will:

- Guide future action
- Help to track progress
- Offer advice



**Somerset  
Wildlife Trust**

**SCAN ME TO  
LEAVE FEEDBACK  
ONLINE**



**FrOme**  
TOWN COUNCIL

Funded by **Somerset  
Rivers Authority**





# 1 - Improving and increasing green spaces

## Actions

1.1 - Increase tree planting

1.2 - Build and enhance climate-resilient wildlife spaces

1.3 - Create and enhance community-led green initiatives

1.4 - Build soil health



## Benefits

Mitigates urban heat island effect

Provides shade and refuge

Improves water quality

Benefits health and wellbeing

Captures and holds water above and below ground

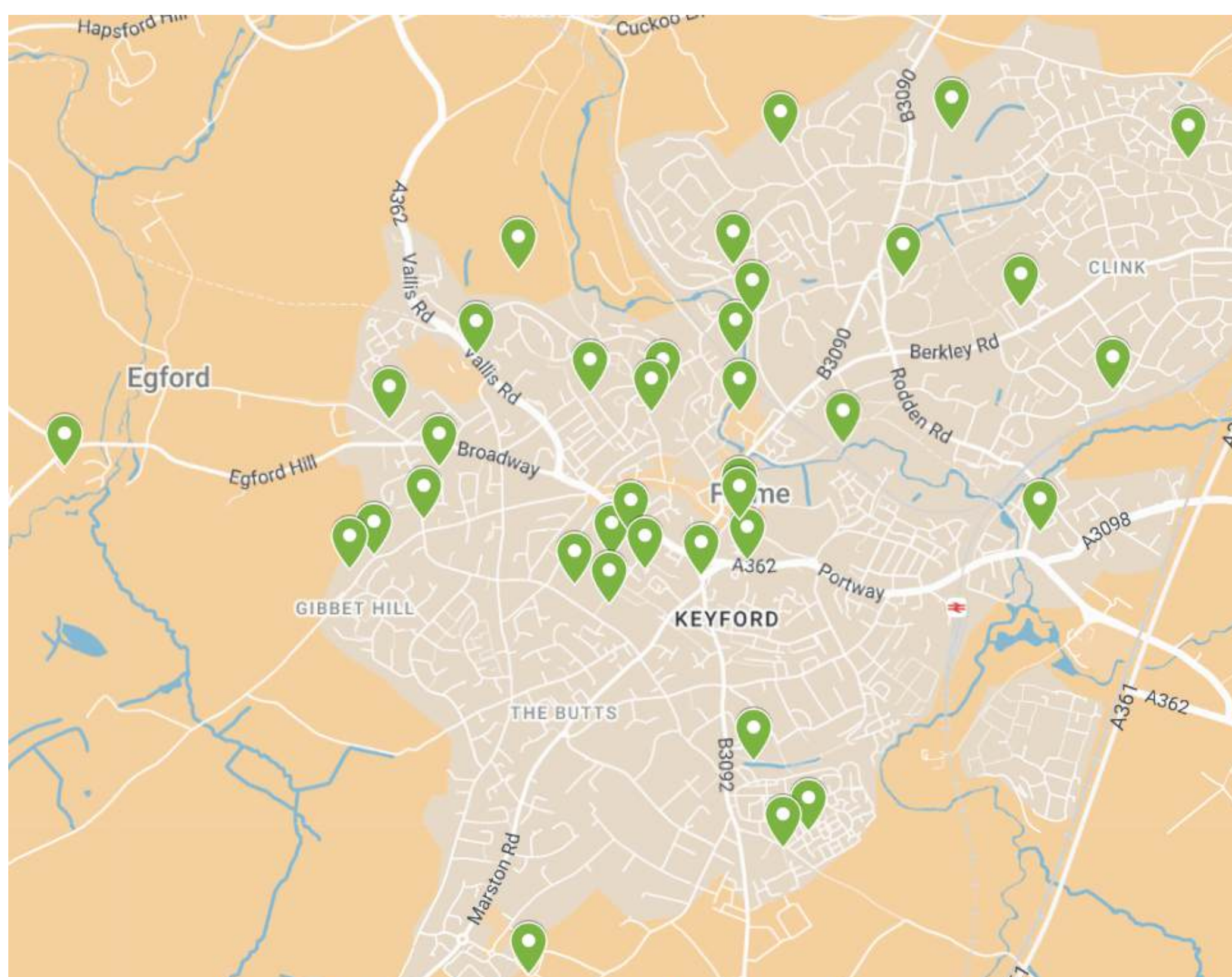
Reduces stormwater runoff

Provides habitat for wildlife

Mitigates climate change



## Locations







## 2 - Adapting to flooding

### Actions

2.1 - Improve drainage infrastructure

2.2 - Encourage rainwater harvesting and use

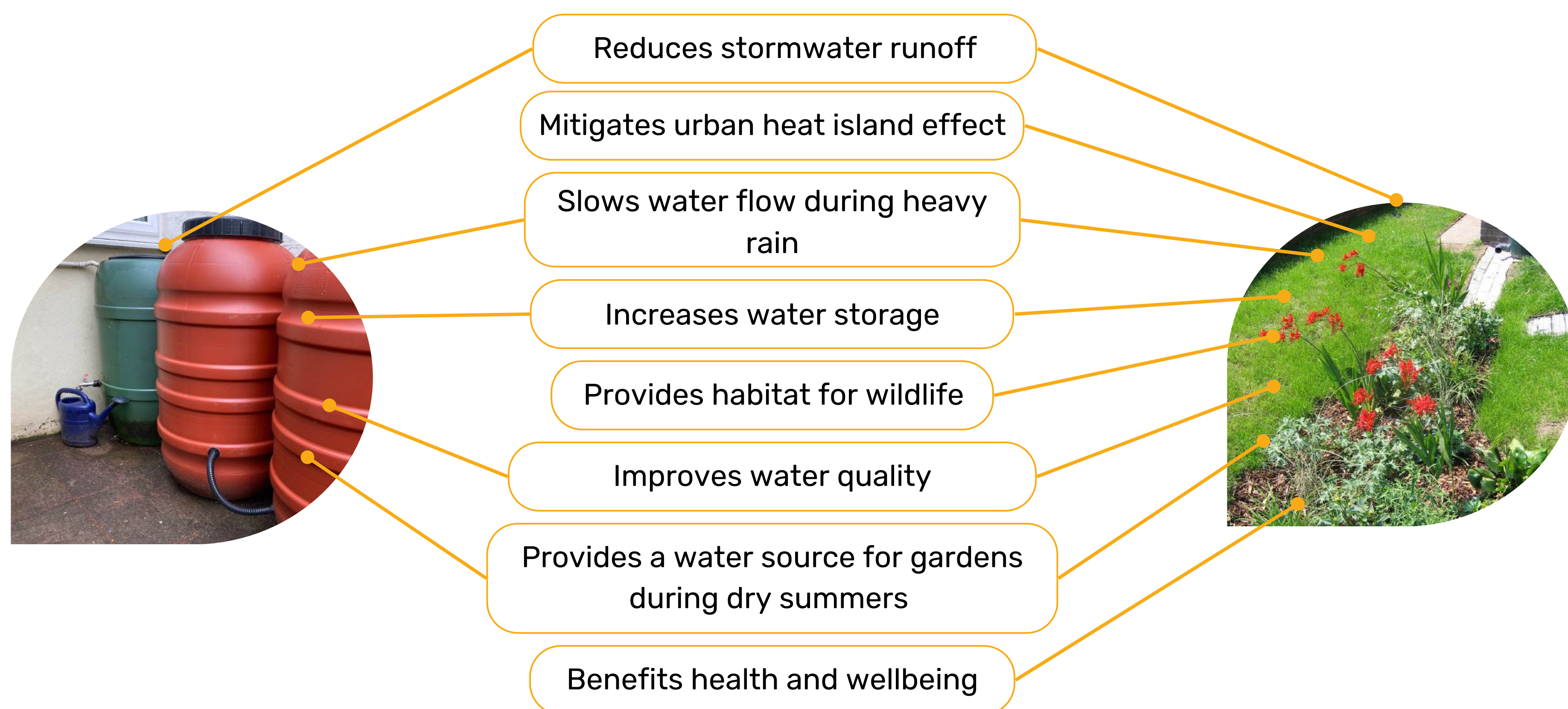
2.3 - Implement natural flood management techniques

2.4 - Create wetland habitat

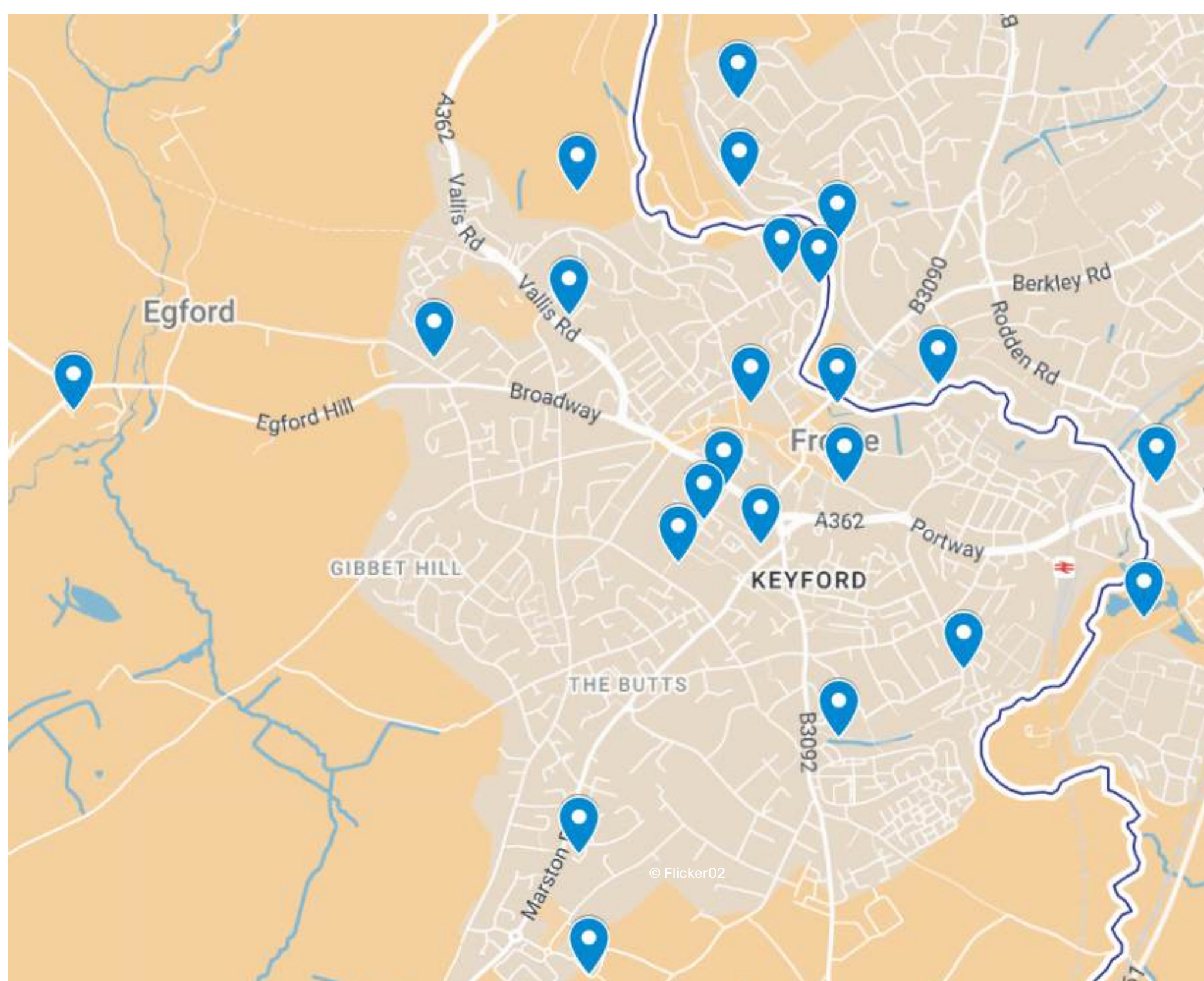
2.5 - Restore river functions



### Benefits



### Locations







# 3 - Sharing knowledge and raising awareness

## Actions

**3.1 - Create solution-focused communications to engage new audiences**

**3.2 - Connect and support community groups**

**3.3 - Develop a positive future vision for broader participation**

**3.4 - Run regular climate engagement events**

**3.5 - Engage with schools**

**3.6 - Create emergency response plans and safe spaces**



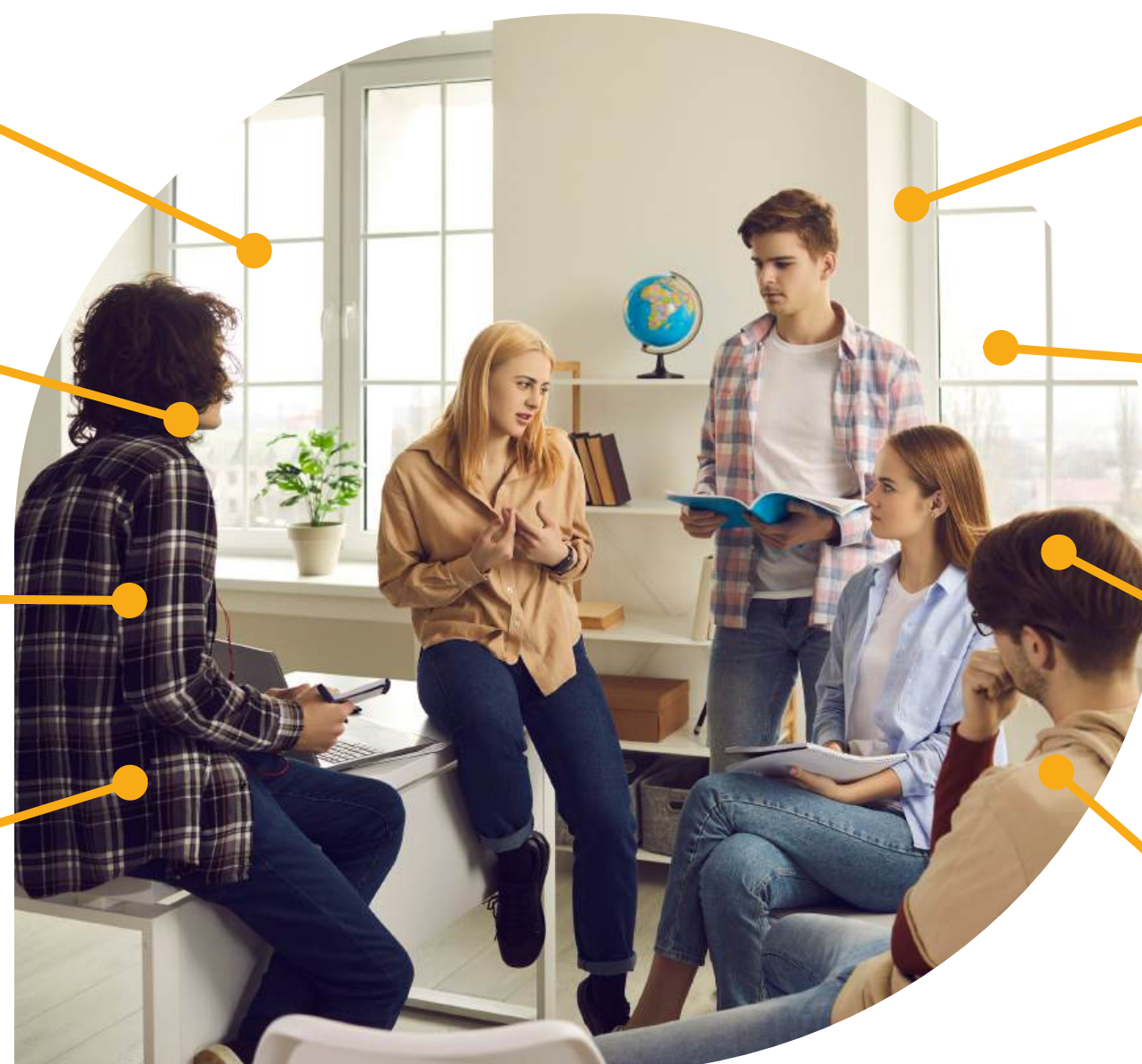
## Benefits

Raises climate awareness

Motivates sustainable actions

Supports green economy

Enables youth leadership



Builds community collaboration

Facilitates open dialogues

Supports sustainable living

Enables informed choices

## Possible projects

**Here are some ideas for projects suggested by local residents:**



Build on neighbourhood networks like Transition Streets Frome, focusing on climate adaptation



Encourage hyper-local action like lifting paving slabs and water butts



Identify a vision, hold an imaginarium



Share emergency planning information regarding what to do for food, water and shelter





# 4 - Planning and development for nature and food

## Actions

**4.1 - Review planning policies and lobby for climate resilient development**

**4.2 - Co-create a master plan for climate-resilient town infrastructure**

**4.3 - Co-create local food resilience plan**

**4.4 - Create community farms and food growing education programmes**



## Benefits

Enhances climate resilience

Fosters collaboration

Increases environmental literacy

Involves the community



Supports sustainable living

Reduces extreme weather impacts

Protects communities' future

Promotes environmental  
stewardship

## Possible projects

**Here are some ideas for projects suggested by local residents:**



Community farms and  
educate on food growing



Draw on local expertise and  
collaborate with local citizens



Lobby for future  
developments and retrofitting  
of existing buildings to be  
climate resilient



Grow food resilience and  
surplus by expanding growing  
spaces using gardens, suitable  
indoor spaces and water  
confluences



## Locations



Improving and  
increasing green  
spaces



Reducing flood  
risks

