

Act to Adapt Glastonbury

Supporting communities across Somerset to adapt to climate change through a series of collaborative events



Shaping a plan for your community

Share your ideas on how Glastonbury can adapt to Climate Change

What is Adaptation?

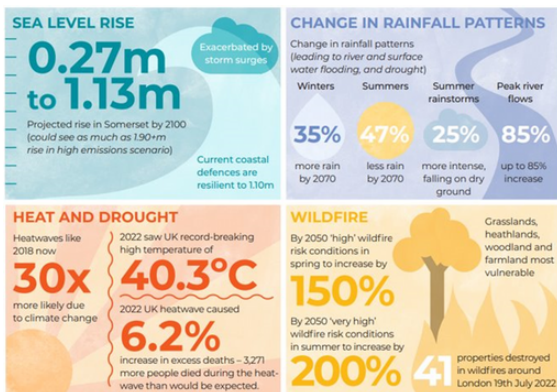
Adjusting to current impacts of climate change or planning for those that are projected.



Adaptation can seek to limit or avoid harm, or exploit beneficial opportunities.



Why we need to adapt



The process



Talk

A workshop to bring local people together to talk about areas at risk from climate change impacts and potential solutions to adapt.

This is a community-wide effort – every voice and idea is valuable to feed into a climate adaptation plan.



Shape

Through online and in-person opportunities, residents will get a chance to provide feedback and suggest other actions to be included in the climate adaptation plan.

This will ensure the plan is shaped by local voices and knowledge.



Act

The climate adaptation plan will be launched with an event, bringing residents together to act and implement as many adaptations as possible!

The plan will:

- Guide future action
- Help to track progress
- Offer advice

This will ensure adaptations provide the greatest benefit to the community.



Somerset
Wildlife Trust

SCAN ME TO
LEAVE FEEDBACK



Team
Wilder

Funded by

Somerset
Rivers Authority



1. Planting more trees and plants

Actions

- 1.1 - Plant and replant orchards
- 1.2 - Add more trees and planters to streets
- 1.3 - Increase tree planting in parks and green spaces
- 1.4 - Plant trees in car parks
- 1.5 - Increase tree planting in school grounds



Benefits

Mitigates urban heat island effect

Provides shade and refuge

Improves water quality

Benefits health and wellbeing



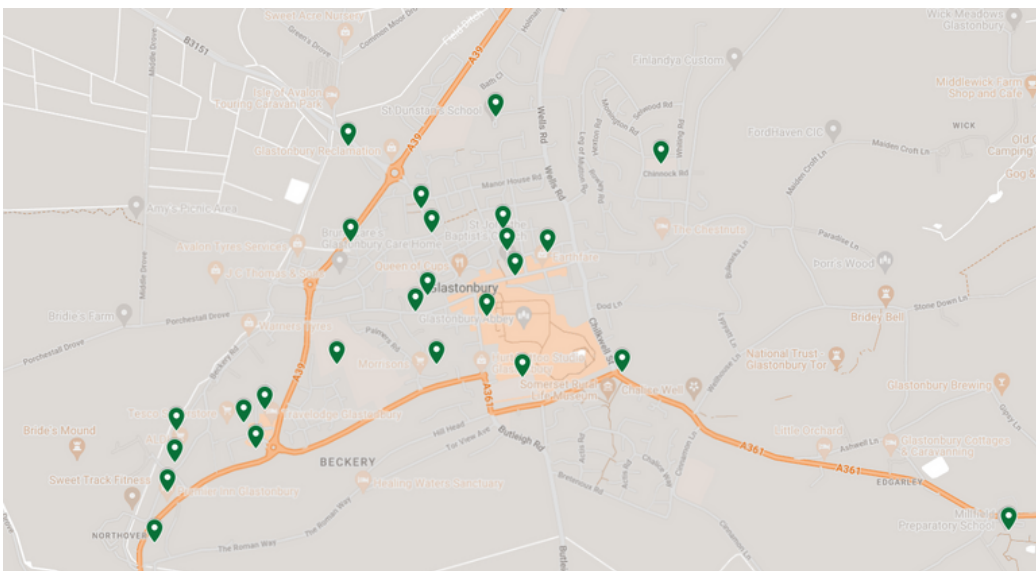
Captures and holds water above and below ground

Reduces stormwater runoff

Provides habitat for wildlife

Mitigates climate change

Locations





2. Adapting to flooding

Actions

- 2.1 - Install water butts in residential areas
- 2.2 - Install water butts on suitable public buildings
- 2.3 - Encourage residents to create rain gardens and ponds
- 2.4 - Create and enlarge ponds at Bride's Mound
- 2.5 - Build rain gardens and ponds in parks and green spaces
- 2.6 - Replace public paved surfaces with permeable alternatives
- 2.7 - Recommend permeable paving around business parks
- 2.8 - Encourage rainwater harvesting in business parks



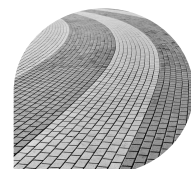
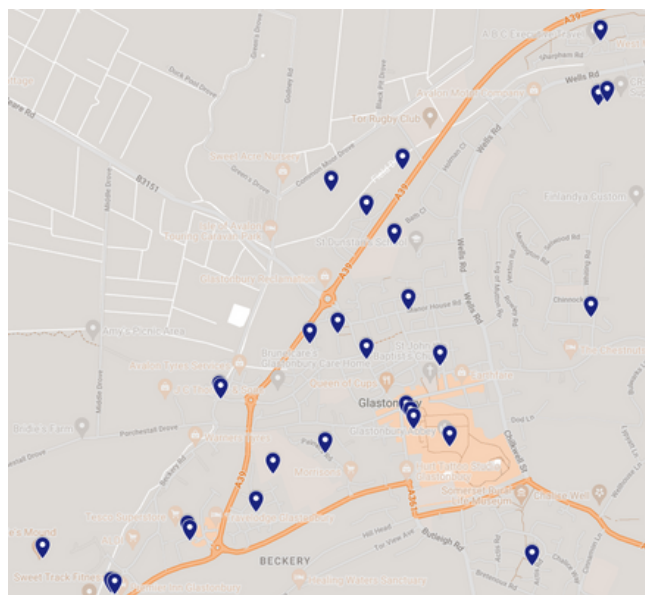
Benefits



- Reduces stormwater runoff
- Mitigates urban heat island effect
- Slows water flows during heavy rain
- Increases water storage
- Provides habitat for wildlife
- Improves water quality
- Provides a water source for gardens during dry summers
- Benefits health and wellbeing



Locations





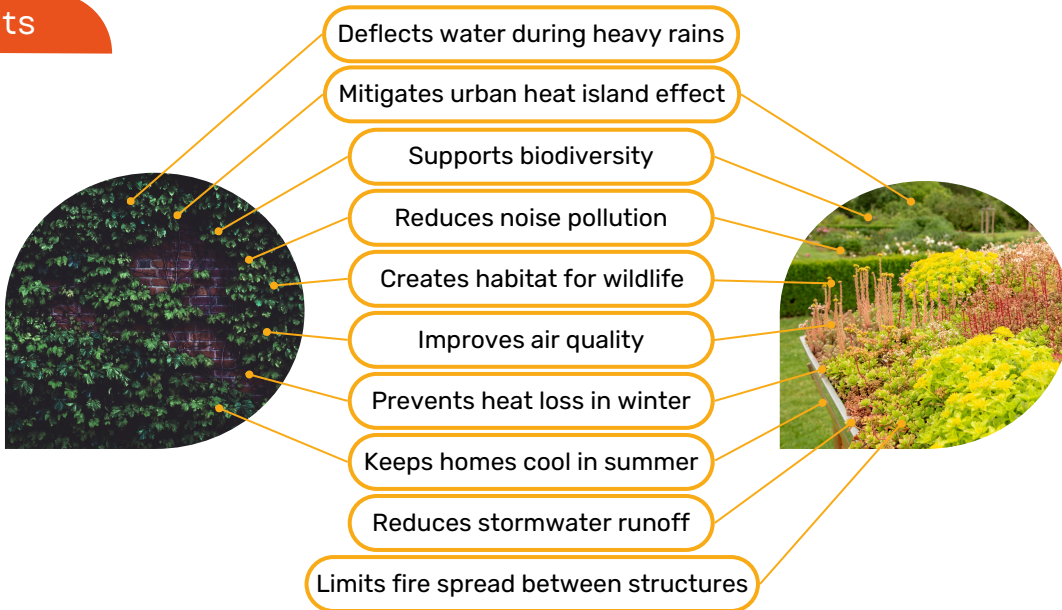
3. Installing green roofs and walls

Actions

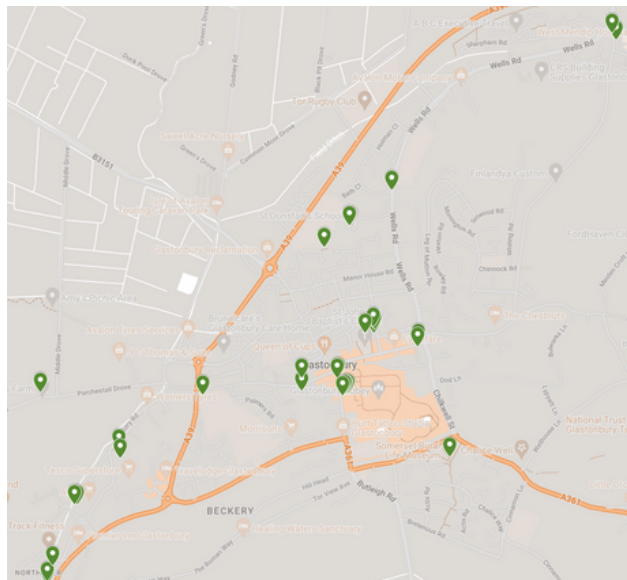
- 3.1 - Install green roofs on bus shelters
- 3.2 - Build green roofs on suitable Council buildings
- 3.3 - Build green roofs on schools
- 3.4 - Support a green roof for the Scout Hut
- 3.5 - Install green roofs on Town Deal buildings
- 3.6 - Install green walls on suitable public buildings and Town Deal buildings



Benefits



Locations





4. Engaging with local planning

Actions

- 4.1 - Add a climate adaptation focus on Town Deal projects
- 4.2 - Create a group for networking on planning issues
- 4.3 - Engage with Somerset's emerging Local Plan
- 4.4 - Build a relationship with the local planning office
- 4.5 - Include climate adaptation in the Neighbourhood Plan
- 4.6 - Reference climate advice from the National Planning Policy Framework into local processes



Benefits

- Enhances resilience
- Fosters collaboration
- Facilitates communication
- Involves community



- Informs choices
- Aligns policies
- Drives economic impact
- Promotes environmental stewardship

Plans

