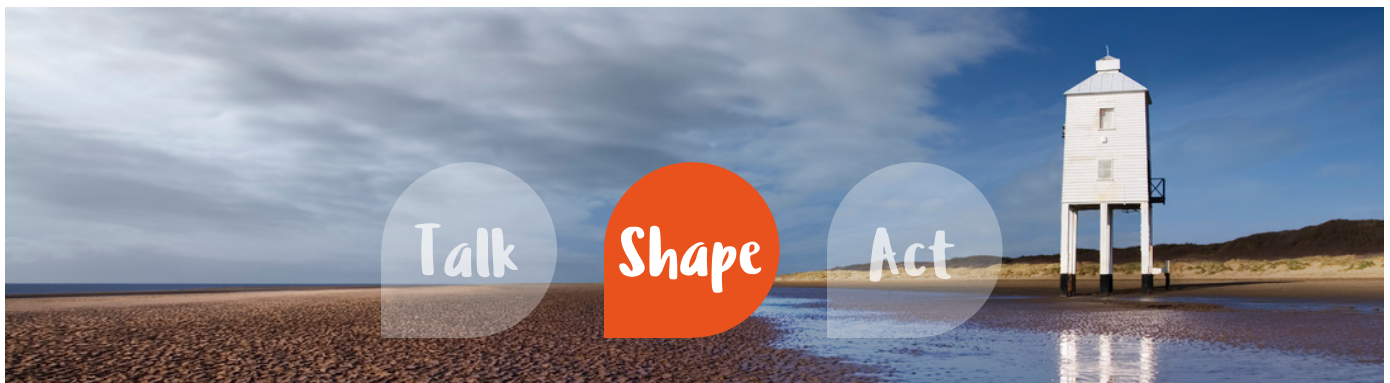


Act to Adapt

Burnham-on-Sea & Highbridge

Supporting communities across Somerset to adapt to climate change through a series of collaborative events



Shaping a plan for your community

Share your ideas for how Burnham-on-Sea and Highbridge can adapt to Climate Change

What is Adaptation?

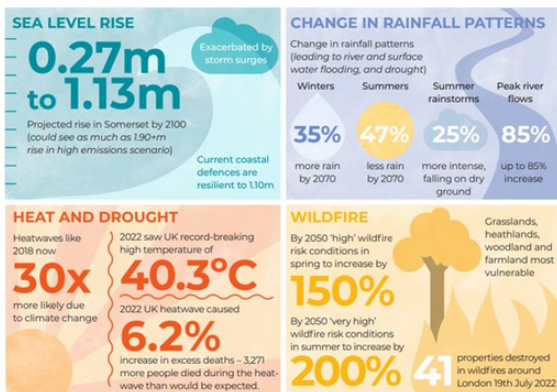
Adjusting to the current impacts of climate change or planning for those that are projected.



Adaptation can seek to limit or avoid harm, or exploit beneficial opportunities.



Why we need to adapt



The process



Talk

A workshop to bring local people together to talk about areas at risk from climate change impacts and potential solutions to adapt.

This is a community-wide effort – every voice and idea is valuable to feed into a climate adaptation plan.



Shape

Through online and in-person opportunities, residents will get a chance to provide feedback and suggest other actions to be included in the climate adaptation plan.

This will ensure the plan is shaped by local voices and knowledge.



Act

The climate adaptation plan will be launched with an event, bringing residents together to act and implement as many adaptations as possible!

The plan will:

- Guide future action
- Help to track progress
- Offer advice

This will ensure adaptations provide the greatest benefit to the community.



Somerset Wildlife Trust

SCAN ME TO LEAVE FEEDBACK ONLINE





1 - Improving and increasing green spaces

Actions

- 1.1 - Audit local green spaces**
- 1.2 - Investigate taking responsibility for green space management**
- 1.3 - Increase tree coverage**
- 1.4 - Create competitions to encourage climate-adapted gardening**
- 1.5 - Start an "Adopt a flower bed" scheme**
- 1.6 - Add trees and planters to streets**
- 1.7 - Make green spaces more climate-adapted and nature-friendly**



Benefits

Mitigates urban heat island effect

Captures and holds water above and below ground

Provides shade and refuge

Reduces stormwater runoff

Improves water quality

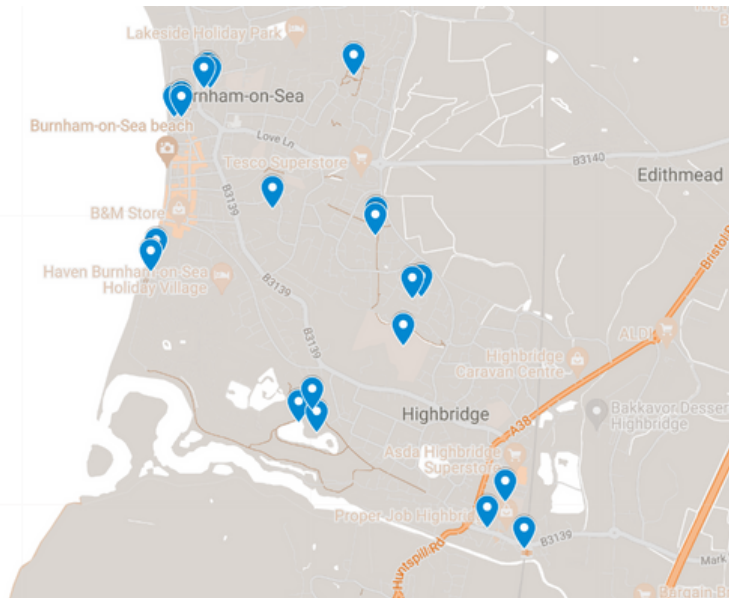
Provides habitat for wildlife

Benefits health and wellbeing

Mitigates climate change



Locations





2 - Matching climate adaptation projects with funding

Actions

- 2.1 - Create a "wish list" of adaptation projects to fund**
- 2.2 - Invest in adaptations using Community Infrastructure Levies**
- 2.3 - Explore the potential of Biodiversity Net Gain**



Benefits

Identifies longer-term funding sources

Speeds up the implementation of priority adaptation actions

Increases opportunities to reduce climate change impacts

Increases opportunities to support local wildlife



Enables residents to set out their priority adaptation actions

Normalises and encourages green infrastructure

Give opportunities to collaborate and strengthen community ties

Possible projects

Here are some ideas for projects suggested by local residents:



"Installing SuDS
(Sustainable
Drainage Systems)"



"Creating wetland areas
next to Forge Rhyne"



"Creating a new park,
similar to Apex Park "



"Installing solar
paving/parking bays"



3 - Sharing knowledge on climate adaptation

Actions

- 3.1 - Publicise the Climate and Ecology Working Group**
- 3.2 - Create and share climate messages and events**
- 3.3 - Create guides on local climate and environment issues**
- 3.4 - Run annual Eco Festivals and Green Energy Summits**
- 3.5 - Work with schools to educate and inspire climate action**
- 3.6 - Organise "climate conversations" training for residents**
- 3.7 - Set up an Eco Centre to support residents with sustainable living**



Benefits



Possible projects

Here are some ideas for projects suggested by local residents:



"Partner with schools to develop educational materials and programmes, conduct workshops and activities"



"Create a leaflet of the history of Apex Park and how it acts as the drainage system"



"Organise training sessions, and provide resources and guidance on effective climate communication"



"Organise social events focused on climate action, and encourage participation in workshops and projects"



4 - Linking climate risks to local policies

Actions

- 4.1 - Work with experts to identify climate vulnerabilities and knowledge gaps**
- 4.2 - Create flood and drought risk plans for the towns**
- 4.3 - Collaborate with others to advocate for climate-adapted planning policies**
- 4.4 - Create a volunteer group to clear drain surfaces and report blockages**



Benefits

Enhances community resilience

Supports economic growth

Reduce climate risks

Fosters stakeholder engagement



Amplifies advocacy efforts

Enables informed decisions

Promotes public health

Supports local innovation

Plans

